



Businesses and Commercial Property For Sale - Sandpoint, Idaho

Honda Dealership

Motorcycles, ATV's, UTV's, Watercraft Sales, Parts,
Accessories & Service.

Power equipment including snowblowers, pumps, lawnmowers, trimmers, parts & service. Outboard motors, parts & service. Atlas Copco products, parts, sales & service. The Snow Hogg - an exclusive, U.S. made ATV / UTV snowblower franchise.

This business has 9 employees.

The owner is ready to retire.



Real Estate consists of two parcels fronting Hwy US 95 with access to Gun Club Rd.

For More Information Contact:

Terry Cooper

(208) 290-1899

Sandpoint. Lifestyle redefined.

"A Norman Rockwell meets Ansel Adams classic"
- USA Today -

"Best Small Town in The West - Sandpoint, Idaho"
- Sunset Magazine -

"Great Adventure Town - Where to Live and Play Now"
- National Geographic Adventure -



Lakeshore Mountain Properties, LLC

Honda Motorcycles, ATV's, UTV's, Parts & Accessories, Power Equipment Sales, Service, and Rentals

The business includes:

Honda Dealership

- * Motorcycles
- * ATV's / UTV's
- * Watercraft
- * Sales, Parts & Accessories
- * Service all Makes & Models

Power Equipment Sales, Rentals, Parts & Service

- * Snowblowers
- * Pumps
- * Lawnmowers & Trimmers
- * Outboard Motors
- * Snow Hogg Snowblowers
- * Grillo Dumper

Atlas Copco Products Dealer

- * For over 25 years
- * Cobra Combi
- * Cobra mk 1
- * Pionjar
- * Sales, Parts & Service
- * MaysTrailEquipment.com

Real Estate

A 12,000 sq. ft. storefront & 1,800 sq. ft. building sit on 2.2 acres. A second parcel is 3.74 acres, per county records. Both front Hwy US 95 with access to Gun Club Rd.



For More Information Contact:

Terry Cooper

(208) 290-1899



[Lakeshore Mountain Properties, LLC](http://LakeshoreMountainProperties,LLC)

Honda Dealership For Sale - Sandpoint, Idaho - Commercial Property

Honda Dealership -----

- * Motorcycles
- * ATV's / UTV's
- * Watercraft
- * Sales, Parts & Accessories
- * Service all Makes & Models

Power Equipment Sales, Rentals, Parts & Service

- * Snowblowers
- * Pumps
- * Lawnmowers & Trimmers
- * Outboard Motors
- * Snow Hogg Snowblowers
- * Grillo Dumper

Atlas Copco Products Dealer

- * For over 25 years
- * Cobra Combi
- * Cobra mk 1
- * Pionjar
- * Sales, Parts & Service
- * MaysTrailEquipment.com

Real Estate

A 12,000 sq. ft. storefront & 1,800 sq. ft. building sit on 2.2 acres. A second parcel is 3.74 acres, per county records. Both front Hwy US 95 with access to Gun Club Rd.



MaysHonda.com

For More Information Contact:

Terry Cooper

(208) 290-1899



[Lakeshore Mountain Properties, LLC](http://LakeshoreMountainProperties,LLC)

Honda Dealership

- * Motorcycles
- * ATV's / UTV's
- * Watercraft
- * Sales, Parts & Accessories
- * Service all Makes & Models



Power Equipment Sales, Rentals, Parts & Service -----

- * Snowblowers
- * Pumps
- * Lawnmowers & Trimmers
- * Outboard Motors
- * Snow Hogg Snowblowers
- * Grillo Dumper



Atlas Copco Products Dealer

- * For over 25 years
- * Cobra Combi
- * Cobra mk 1
- * Pionjar
- * Sales, Parts & Service
- * MaysTrailEquipment.com



Real Estate

A 12,000 sq. ft. storefront & 1,800 sq. ft. building sit on 2.2 acres. A second parcel is 3.74 acres, per county records. Both front Hwy US 95 with access to Gun Club Rd.

For More Information Contact:

Terry Cooper

(208) 290-1899



[Lakeshore Mountain Properties, LLC](http://LakeshoreMountainProperties,LLC)

Business For Sale - Power Equipment Sales, Service & Rentals - Honda Dealership - Sandpoint, Idaho

Honda Dealership

- * Motorcycles
- * ATV's / UTV's
- * Watercraft
- * Sales, Parts & Accessories
- * Service all Makes & Models

Power Equipment Sales, Rentals, Parts & Service

- * Snowblowers
- * Pumps
- * Lawnmowers & Trimmers
- * Outboard Motors
- * Snow Hogg Snowblowers
- * Grillo Dumper

Atlas Copco Products Dealer ----

- * For over 25 years
- * Cobra Combi
- * Cobra mk 1
- * Pionjar
- * Sales, Parts & Service
- * MaysTrailEquipment.com



Real Estate

A 12,000 sq. ft. storefront & 1,800 sq. ft. building sit on 2.2 acres. A second parcel is 3.74 acres, per county records. Both front Hwy US 95 with access to Gun Club Rd.

For More Information Contact:

Terry Cooper

(208) 290-1899



[Lakeshore Mountain Properties, LLC](http://LakeshoreMountainProperties,LLC)

Commercial Property For Sale - Honda Dealership - Power Equipment Sales, Service & Rentals

Honda Dealership

- * Motorcycles
- * ATV's / UTV's
- * Watercraft
- * Sales, Parts & Accessories
- * Service all Makes & Models

Power Equipment Sales, Rentals, Parts & Service

- * Snowblowers
- * Pumps
- * Lawnmowers & Trimmers
- * Outboard Motors
- * Snow Hogg Snowblowers
- * Grillo Dumper

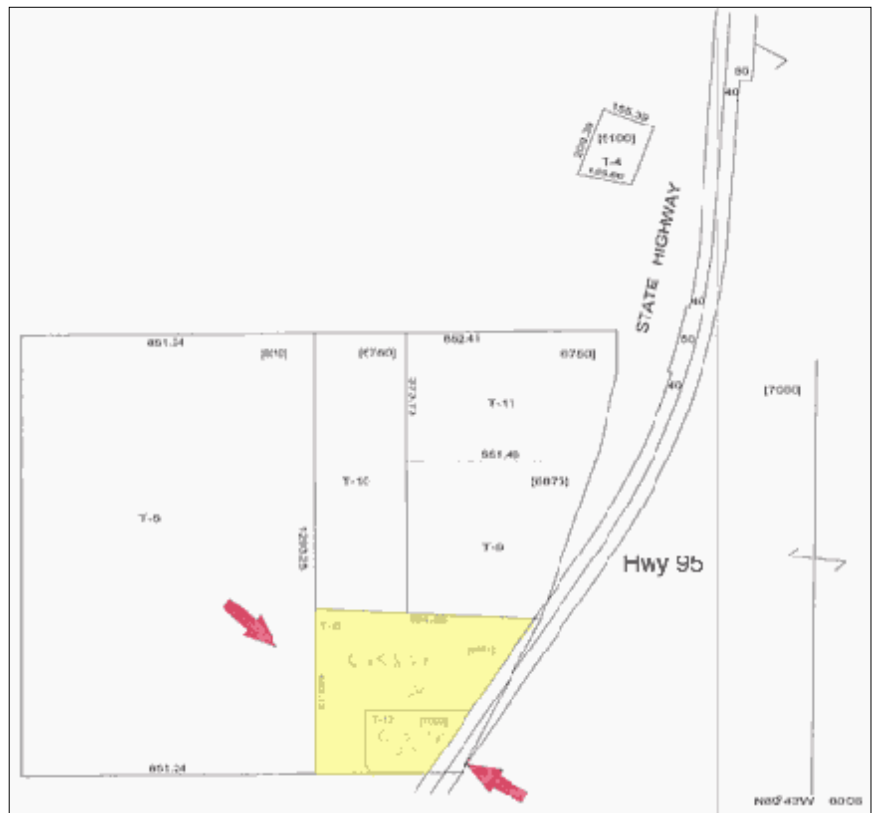


Atlas Copco Products Dealer

- * For over 25 years
- * Cobra Combi
- * Cobra mk 1
- * Pionjar
- * Sales, Parts & Service
- * MaysTrailEquipment.com

Real Estate -----

A 12,000 sq. ft. storefront & 1,800 sq. ft. building sit on 2.2 acres. A second parcel is 3.74 acres, per county records. Both front Hwy US 95 with access to Gun Club Rd.



For More Information Contact:

Terry Cooper

(208) 290-1899



Lakeshore Mountain Properties, LLC